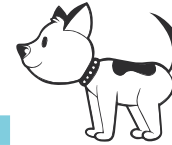




THE KARL Hack



It is a normal developmental and social behavior for puppies to need to rough house with other social members through biting, ambushing, wrestling, etc, and yet many dogs find themselves without a fellow canine playmate in their pet homes these days.

WHEN to use it and How it works!

Of course, humans (or uninterested pets) are not generally fond of being on the receiving end of these kinds of behaviors in their puppies, so families need to be able to discourage their dogs from pursuing inappropriate or unwilling targets in order to satisfy these impulses. Rather than simply trying to suppress or inhibit these normal behavioral actions and sequences in our pet dogs, we need to provide a healthy outlet of expression for these instincts as they emerge, as we would provide enrichment for any other natural behavior.

Enter Karl - the life sized stuffed dog - BFF for your pup!

HOW to use it

- By simply making Karl available immediately before the “witching hours” most pups experience daily (morning and evening periods of high activity),
- or at all times for pups who are “on” all day. You can reduce your pup’s frustration and prevent him from targeting unwilling social members in the home with his urges.
- Karl is also a great way to facilitate safe and healthy adult supervised play between dogs and children in the household. The child can animate Karl and he serves as a buffer for the dog’s arousal and normal play response.

How you use Karl or when he is made available to your dog is solely contingent on that particular dog’s needs and reactions to Karl.



YouTube Link: <https://www.youtube.com/watch?v=5AR-PTnaBno>

Equipment

“Karl”, a life-size stuffed dog readily available through Melissa and Doug children’s toys, preferably in standing posture, sized equal to or larger than the actual dog. The standing stuffed dog provides the social referencing needed for some dogs to elicit play. You also want the space you are in to be big enough for the puppy to really be able to engage with Karl





THE KARL Hack

It is a normal developmental and social behavior for puppies to need to rough house with other social members through biting, ambushing, wrestling, etc, and yet many dogs find themselves without a fellow canine playmate in their pet homes these days.

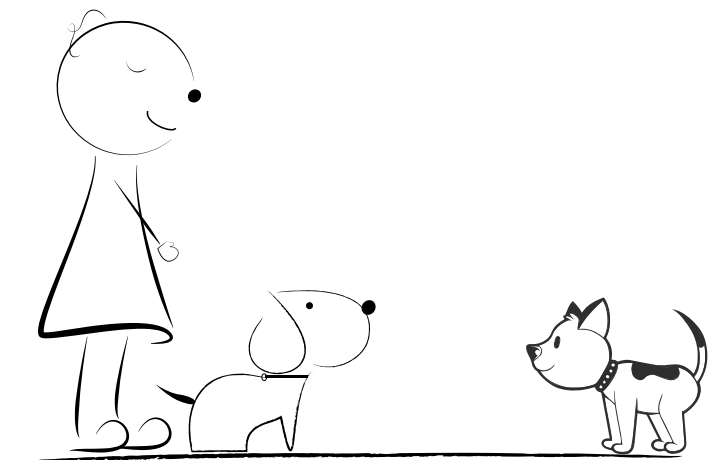
Step 1

Introduce the puppy to Karl

Bring him out and observe how the dog is responding. If the pup seems enthusiastic and playful, let the fun begin.

If the dog seems a bit intimidated or fearful, try laying Karl on his side and allow the dog to investigate. If the dog starts to get curious, begin to animate Karl, still laying on his side, and as the pup becomes more confident you can stand him up.

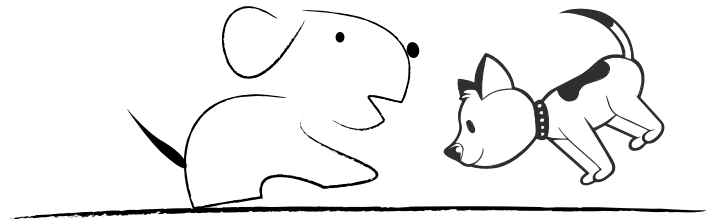
If you have a dog that seems disinterested, you may begin to animate Karl which generally gets the puppy excited and playing.



Step 2

Allow the puppy to play with Karl

- in any way they want. Biting, shaking, dragging, chewing, wrestling, humping etc., are all acceptable forms of play with Karl. Remember, these are natural instincts for which we are providing an appropriate outlet.



Step 3

Continue to let the puppy play with Karl

Let them play until they get tired and move on. Some puppies can get over aroused and need a break from Karl if they are getting too jacked up (if you have a dog like this, playing with Karl can be a great way to work with regulating arousal). Of course if the dog is severely de-stuffing Karl you will need to take him away to perform re-constructive surgery.

